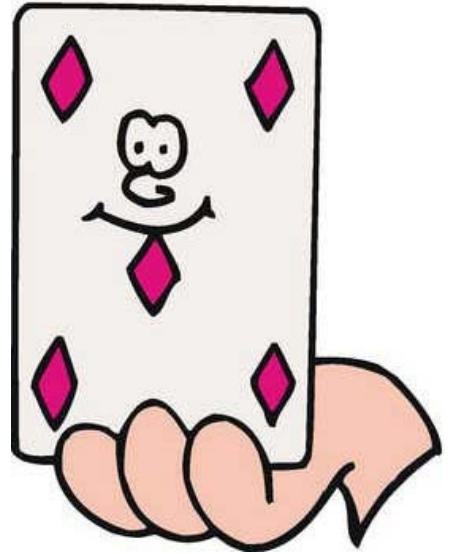
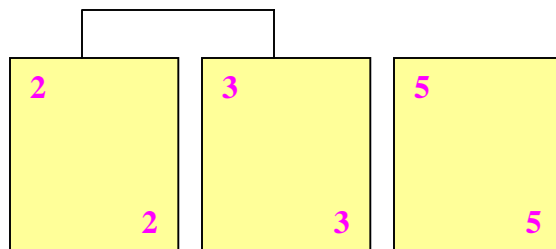


# Laying Down the Facts



1. Retrieve a deck of playing cards.
2. Shuffle the deck and place the cards face down.
3. Each player draws three cards.
4. Each player studies their cards to see if they can make an addition fact using all three cards.
5. The cards are then arranged on the playing surface and the "fact" is stated.



**Addition Fact:**

$$5 + 5 = 10$$

6. The player sets her cards aside and draws three new cards and repeats the process. If she cannot make a fact, she draws one card. If she still cannot make a fact, her turn ends.
7. Players alternate turns.
8. The player who puts aside more cards wins.